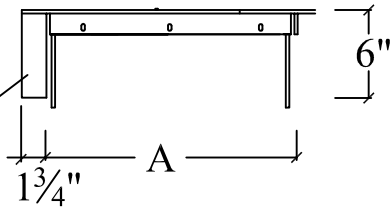
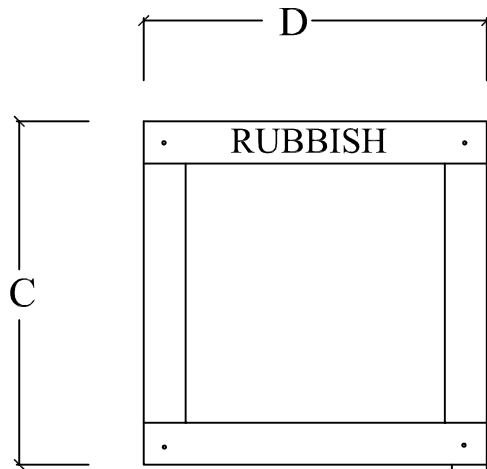
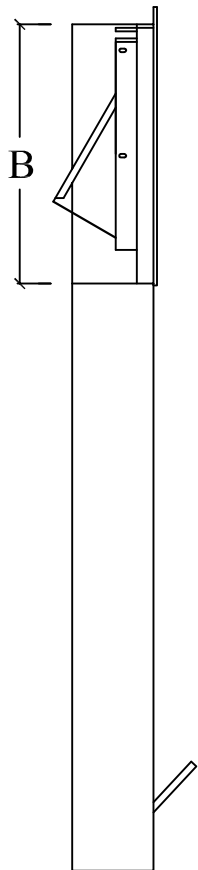


TOP VIEW



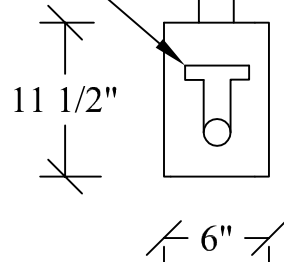
CONCEALED CLOSER MECHANISM INSIDER
SERVICEABLE ENCLOSURE

SIDE VIEW



FRONT VIEW

FOOT SWITCH



DOORS COMPLETE WITH SELF CLOSING
HYDRAULIC CYLINDERS, SELF
LATCHING TRIGGER ASSEMBLY
THE DOOR FRAME IS COVERED WITH
22 GA. STAINLESS STEEL NO.4 FINISH
WITH EMBOSS LETTERING "RUBBISH"
ON TOP OF TRIM PIECE

DOOR SIZE	A	B	C	D
12" x 15"	12-1/2"	16-3/4"	19-3/4"	16-3/4"
15" x 18"	15-1/2"	19-3/4"	22-3/4"	19-3/4"
18" x 18"	18-1/2"	19-3/4"	22-3/4"	22-3/4"
21" x 18"	21-1/2"	19-3/4"	22-3/4"	25-3/4"
24" x 24"	24-1/2"	28-3/4"	28-3/4"	28-3/4"